



JT AD SERIES

All Electric Servo Drive Vertical Type Injection Molding Machine

Specifications (in U.S. Unit)

Model	JT20RAD JT40RAD JT70RAD	JT100RAD JT150RAD	JT220RAD JT220RAD(Wide)	JT40AD JT70AD JT100AD
--------------	-------------------------------	----------------------	----------------------------	-----------------------------

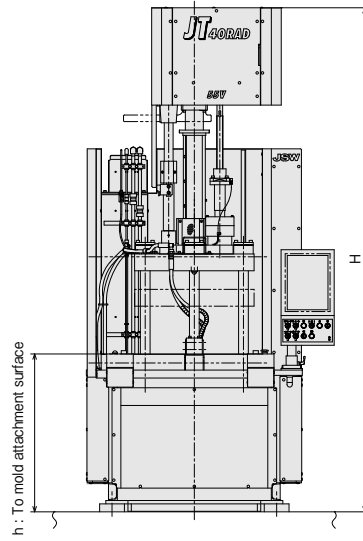
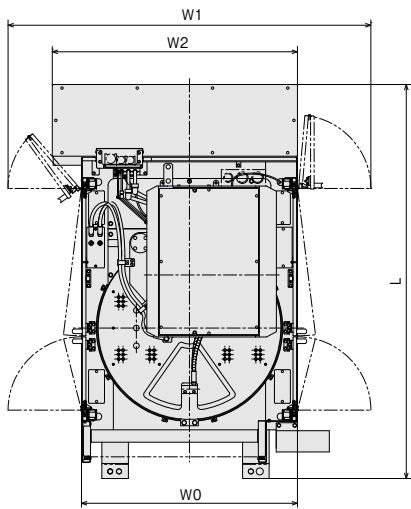
JSW



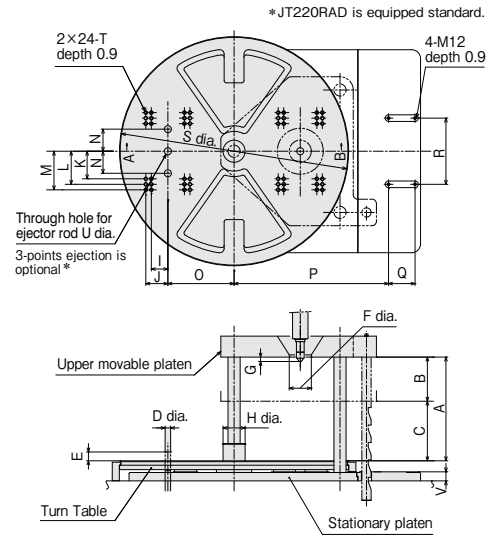
JQA-QMA13993
JQA-EM6416

JT-AD SERIES Equipment Dimensions

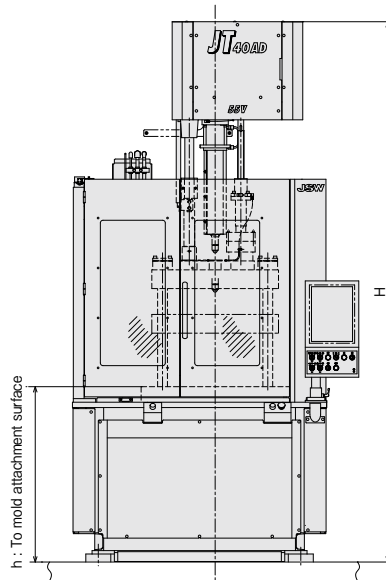
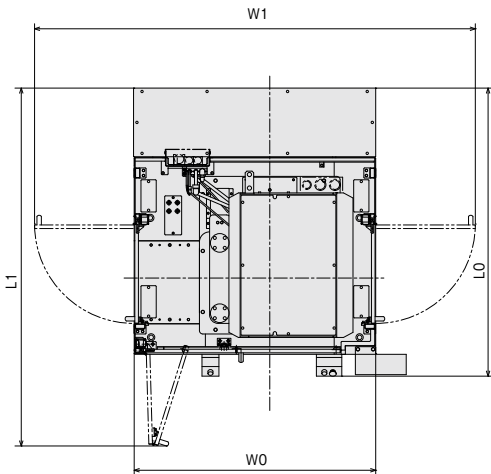
Rotary type Equipment dimensions



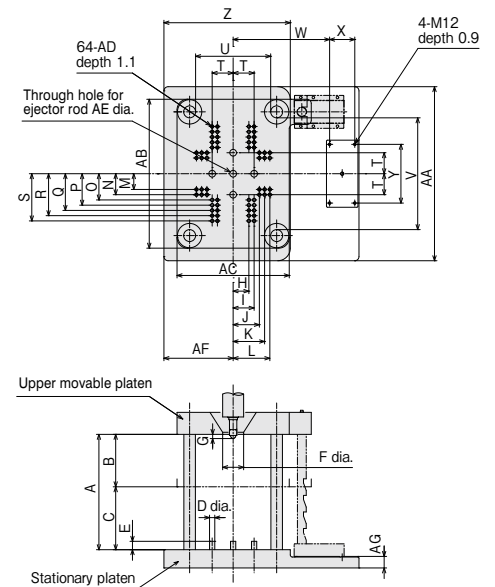
Rotary type Mold related dimensions



Single acting type Equipment dimensions



Single acting type Mold related dimensions



Mold Related Dimensions

Rotary type

(Unit: in)

Model	A	B	C	D	E	F	G	H	I	J	K	L	M	N	O	P	Q	R	S	T	U	V
JT20RAD	16.93	7.87	5.906~9.055	1.0	1.575	4.0	0.8	3.4	2	3	4	5	6	3.5	10.83	27.6	4.7	11.8	35.91	5/8-11UNC	1.26	1.42
JT40RAD	18.50	7.87	6.693~10.630	1.0	1.575	4.0	0.8	3.9	3	4	5	6	7	3.5	11.81	27.6	4.7	11.8	40.63	5/8-11UNC	1.26	1.61
JT70RAD	21.65	9.84	7.874~11.811	1.0	2.362	4.0	0.8	4.7	3	5	6	7	8	3.5	13.39	30.3	4.7	11.8	45.67	5/8-11UNC	1.26	1.81
JT100RAD	23.62	9.84	9.843~13.780	1.0	2.362	4.0	0.8	5.5	4	6	7	8	9	3.5	15.16	36.0	4.7	11.8	51.57	5/8-11UNC	1.26	1.89
JT150RAD	25.59	9.84	11.811~15.748	1.0	2.362	4.0	0.8	6.7	5	7	8	9	10	3.5	17.52	40.2	4.7	11.8	58.66	5/8-11UNC	1.26	2.48
JT220RAD	31.50	13.78	13.780~17.717	1.2	3.937	4.0	0.8	7.5	5	7	8	9	10	3.5	19.09	48.9	4.7	11.8	64.17	5/8-11UNC	1.46	3.39
JT220RAD (wide)	31.50	13.78	13.780~17.717	1.2	3.937	4.0	0.8	7.5	5	7	8	9	10	3.5	19.09	48.9	4.7	11.8	69.29	5/8-11UNC	1.46	3.39

Single acting type

(Unit: in)

Model	A	B	C	D	E	F	G	H	I	J	K	L	M	N	O	P	Q	R	S	T	U	V
JT40AD	21.65	9.84	7.874~11.811	1.0	1.575	4.0	0.8	3	4	5	6	7	3	4	5	6	7	8	9	3.5	14.17	21.06
JT70AD	23.62	9.84	9.843~13.780	1.0	2.362	4.0	0.8	3	5	6	7	8	3	5	6	7	8	9	10	3.5	16.14	21.65
JT100AD	25.59	9.84	11.811~15.748	1.0	2.362	4.0	0.8	4	6	7	8	9	4	6	7	8	9	10	11	3.5	18.11	23.43

Model	W	X	Y	Z	AA	AB	AC	AD	AE	AF	AG
JT40AD	18.1	4.7	11.0	23.72	32.68	27.95	21.06	5/8-11UNC	1.26	12.99	2.17
JT70AD	19.7	4.7	11.0	27.66	36.61	29.92	24.41	5/8-11UNC	1.26	15.35	2.17
JT100AD	21.7	4.7	11.0	31.20	38.98	33.07	27.95	5/8-11UNC	1.26	17.32	2.76

■ Equipment Dimensions

Rotary type

(Unit: ft)

Model	Injection module	L	W0	W1	W2	H min.	H max.	h	Weight (US ton)
JT20RAD	20V STD/HR*	7.30	3.61	6.33	4.54	7.85	8.64	2.90	2.9
	20V-HS*	7.30	3.61	6.33	4.54	8.24	9.82	2.90	3.0
	55V STD/HR	7.30	3.61	6.33	4.54	7.85	9.15	2.90	3.0
JT40RAD	20V STD/HR	7.30	4.00	6.73	4.54	7.15	8.82	2.92	3.4
	20V-HS	7.30	4.00	6.73	4.54	8.32	10.00	2.92	3.5
	55V STD/HR	7.30	4.00	6.73	4.54	7.66	9.33	2.92	3.5
	55V-HS	7.30	4.00	6.73	4.54	9.06	10.73	2.92	3.6
JT70RAD	110V STD/HR	7.30	4.00	6.73	4.54	8.50	10.18	2.92	3.8
	55V STD/HR	7.80	4.46	7.53	4.61	8.11	10.04	3.26	4.4
	55V-HS	7.80	4.46	7.53	4.61	9.50	11.44	3.26	4.6
JT100RAD	110V STD/HR	7.80	4.46	7.53	4.61	8.95	10.89	3.26	4.6
	110V-HS	7.80	4.46	7.53	4.61	10.84	12.78	3.26	5.0
	55V STD/HR	8.71	4.99	8.54	5.61	8.54	10.57	3.53	5.6
	55V-HS	8.71	4.99	8.54	5.61	9.94	11.97	3.53	5.8
JT150RAD	110V STD/HR	8.71	4.99	8.54	5.61	9.38	11.42	3.53	5.8
	110V-HS	8.71	4.99	8.54	5.61	11.28	13.31	3.53	6.2
	230V	8.71	4.99	8.54	5.61	10.38	12.42	3.53	6.6
	110V STD/HR	9.27	5.64	9.61	6.23	9.94	12.04	3.93	7.8
JT220RAD	110V-HS	9.27	5.64	9.61	6.23	11.84	13.94	3.93	8.1
	230V	9.27	5.64	9.61	6.23	10.94	13.04	3.93	8.4
	230V-HS	9.27	5.64	9.61	6.23	12.87	14.97	3.93	8.8
JT220RAD (Wide)	230V	11.09	6.07	10.70	6.07	12.30	14.92	4.82	12.5
	230V-HS	11.09	6.07	10.70	6.07	13.93	16.55	4.82	13.0
	410V	11.09	6.07	10.70	6.07	15.00	17.63	4.82	13.5
	410V-HS	11.09	6.07	10.70	6.07	15.15	17.78	4.82	13.7
JT220RAD (Wide)	230V	11.08	6.50	11.12	6.07	12.30	14.92	4.82	12.9
	230V-HS	11.08	6.50	11.12	6.07	13.93	16.55	4.82	13.5
	410V	11.08	6.50	11.12	6.07	15.00	17.63	4.82	14.0
	410V-HS	11.08	6.50	11.12	6.07	15.15	17.78	4.82	14.2

Single acting type

(Unit: ft)

Model	Injection module	LO	L1	W0	W1	H min.	H max.	h	Weight (US ton)
JT40AD	20V STD/HR	6.01	7.49	4.68	8.52	7.55	9.42	3.22	3.4
	20V-HS	6.01	7.49	4.68	8.52	8.72	10.59	3.22	3.5
	55V STD/HR	6.01	7.49	4.68	8.52	8.06	9.93	3.22	3.5
	55V-HS	6.01	7.49	4.68	8.52	9.46	11.33	3.22	3.6
	110V STD/HR	6.01	7.49	4.68	8.52	8.90	10.77	3.22	3.8
JT70AD	55V STD/HR	6.29	7.95	5.05	9.59	8.42	10.35	3.41	4.3
	55V-HS	6.29	7.95	5.05	9.59	9.82	11.75	3.41	4.4
	110V STD/HR	6.29	7.95	5.05	9.59	9.26	11.20	3.41	4.5
	110V-HS	6.29	7.95	5.05	9.59	11.15	13.09	3.41	4.7
JT100AD	55V STD/HR	6.53	8.15	5.31	10.61	8.79	10.83	3.62	5.0
	55V-HS	6.53	8.15	5.31	10.61	10.19	12.22	3.62	5.1
	110V STD/HR	6.53	8.15	5.31	10.61	9.64	11.67	3.62	5.3
	110V-HS	6.53	8.15	5.31	10.61	11.53	13.57	3.62	5.5
	230V	6.53	8.15	5.31	10.61	10.64	12.67	3.62	5.8

HR*... Low-inertia (option) HS*... High-speed (option)

Rotary Type Performance Table

Unit	Item	Model	JT20RAD						JT40RAD						
			20V			55V			20V			55V			
			K	A	B(Optional)	K	A	B(Optional)	K	A	B(Optional)	K	A	B(Optional)	
Injection Unit	Screw barrel type		K	A	B(Optional)	K	A	B(Optional)	K	A	B(Optional)	K	A	B(Optional)	
	Screw diameter	in	0.71	0.79	0.87	0.98	1.10	1.26	0.71	0.79	0.87	0.98	1.10	1.26	
	Screw stroke	in	2.559			3.543			2.559			3.543			
	Theoretical injection capacity	in ³	1.01	1.25	1.52	2.67	3.37	4.42	1.01	1.25	1.52	2.67	3.37	4.42	
	Injection capacity (GP-PS)	oz	0.6	0.7	0.8	1.5	1.8	2.4	0.6	0.7	0.8	1.5	1.8	2.4	
	Standard	Injection pressure (Max.)	psi	32200	26110	21610	32780	26110	20020	32200	26110	21610	32780	26110	20020
		Holding pressure (Max.)	psi	29010	23500	19440	29440	23500	17980	29010	23500	19440	29440	23500	17980
		Injection speed	in/s	11.81			10.63			11.81			10.63		
		Injection rate	in ³ /s	4.7	5.8	7.0	8.0	10.1	13.3	4.7	5.8	7.0	8.0	10.1	13.3
		Plasticizing rate (GP-PS)	oz/s	0.14	0.18	0.22	0.20	0.24	0.29	0.14	0.18	0.22	0.20	0.24	0.29
		Screw speed	rpm	500			350			500			350		
	Low-inertia (HR) Option	Injection pressure (Max.)	psi	35820	29010	23930	36400	29010	22190	35820	29010	23930	36400	29010	22190
		Holding pressure (Max.)	psi	32200	26110	21610	32780	26110	20020	32200	26110	21610	32780	26110	20020
		Injection speed	in/s	13.78			13.78			13.78			13.78		
		Injection rate	in ³ /s	5.5	6.8	8.2	10.4	13.1	17.2	5.5	6.8	8.2	10.4	13.1	17.2
		Plasticizing rate (GP-PS)	oz/s	0.14	0.18	0.22	0.20	0.24	0.29	0.14	0.18	0.22	0.20	0.24	0.29
		Screw speed	rpm	500			350			500			350		
	High-speed (HS) Option	Injection pressure (Max.)	psi	35820	29010	23930	Not applicable			35820	29010	23930	36400	29010	22190
		Holding pressure (Max.)	psi	32200	26110	21610				32200	26110	21610	32780	26110	20020
		Injection speed	in/s	21.65						21.65			19.69		
		Injection rate	in ³ /s	8.6	10.6	12.9				8.6	10.6	12.9	14.9	18.7	24.6
		Plasticizing rate (GP-PS)	oz/s	0.14	0.18	0.22				0.14	0.18	0.22	0.20	0.24	0.29
		Screw speed	rpm	500						500			350		
	Nozzle touch force	US ton	1.65			1.65			1.65			1.65			
	Nozzle stroke from platen	in	0.80						0.80						
	Type of nozzle		Open nozzle						Open nozzle						
	Barrel temperature control		Barrel: 3, nozzle: 2						Barrel: 3, nozzle: 2						
Heater wattage	kW	3.0			5.5			3.0			5.5				
Clamping Unit	Mechanism		Double toggle						Double toggle						
	Clamping force	US ton	22.0						44.1						
	Daylight opening (Max.)	in	16.93						18.50						
	Opening stroke (Max.)	in	7.87						7.87						
	Mold height	in	5.906 ~ 9.055						6.693 ~ 10.630						
	Mold size (Max.)	in	12.01 × 12.01						14.37 × 14.37						
	Lower mold weight (Max.)	lb	331 × 2						496 × 2						
	Table outside diameter	mm	35.91						40.63						
	Ejector point		1 point						1 point						
	Ejector force	US ton	1.98						1.98						
Ejector stroke	in	1.575						1.575							
Miscellaneous	Machine weight	US ton	2.9			3.0			3.4			3.5			
	Machine weight (HS)	US ton	3.0			Not applicable			3.5			3.6			
	Machine dimensions (L×W×H)	ft	7.30	4.54	8.65	7.30	4.54	9.16	7.30	4.54	8.83	7.30	4.54	9.34	
	Machine dimensions (HS)(L×W×H)	ft	7.30	4.54	9.82	Not applicable			7.30	4.54	10.00	7.30	4.54	10.74	
	Table height	ft	2.90						2.92						

Remarks:

- Maximum injection pressure and maximum holding pressure may be restricted due to molding condition.
- The theoretical injection capacity is (cross sectional area of barrel) × (stroke of screw).
- The injection capacity is applicable for GP-PS and variable according to the grade of resin, molding conditions and mold.
- The plasticizing rate is applicable for GP-PS.
- PC, HPVC, other engineering plastic, etc., low temperature setting and high speed molding may require a high torque depending on the grade or molding conditions. Please contact us if you plan.

Note:

- Due to continual improvements, specifications are subject to change without notice.
- Actual figures of the specification will vary depending on final machine configuration. Please contact us if you require more specific data.
- Performance specifications are based on theoretical data.
- Low inertia injection specifications and high-speed injection specifications can be handled as option.
- Screw barrel type B is optional.

	JT40RAD			JT70RAD						JT100RAD								
	110V			55V			110V			55V			110V			230V		
	K	A	B(Option)	K	A	B(Option)	K	A	B(Option)	K	A	B(Option)	K	A	B(Option)	K	A	B(Option)
	1.26	1.38	1.57	0.98	1.10	1.26	1.26	1.38	1.57	0.98	1.10	1.26	1.26	1.38	1.57	1.57	1.77	1.97
	4.331			3.543			4.331			3.543			4.331			5.709		
	5.40	6.48	8.38	2.67	3.37	4.42	5.40	6.48	8.38	2.67	3.37	4.42	5.40	6.48	8.38	11.05	14.05	17.40
	3.0	3.6	4.6	1.5	1.8	2.4	3.0	3.6	4.6	1.5	1.8	2.4	3.0	3.6	4.6	6.1	7.7	9.6
	31180	26110	20020	32780	26110	20020	31180	26110	20020	32780	26110	20020	31180	26110	20020	33070	26110	21180
	28140	23500	17980	29440	23500	17980	28140	23500	17980	29440	23500	17980	28140	23500	17980	29730	23500	19000
	6.30			10.63			6.30			10.63			6.30			6.30		
	7.9	9.4	12.2	8.0	10.1	13.3	7.9	9.4	12.2	8.0	10.1	13.3	7.9	9.4	12.2	12.2	15.5	19.2
	0.29	0.39	0.49	0.20	0.24	0.29	0.29	0.39	0.49	0.20	0.24	0.29	0.29	0.39	0.49	0.59	0.74	0.86
	300			350			300			350			300			250		
	34660	29010	22190	36400	29010	22190	34660	29010	22190	36400	29010	22190	34660	29010	22190	Not applicable		
	31180	26110	20020	32780	26110	20020	31180	26110	20020	32780	26110	20020	31180	26110	20020			
	7.87			13.78			7.87			13.78			7.87					
	9.8	11.8	15.2	10.4	13.1	17.2	9.8	11.8	15.2	10.4	13.1	17.2	9.8	11.8	15.2			
	0.29	0.39	0.49	0.20	0.24	0.29	0.29	0.39	0.49	0.20	0.24	0.29	0.29	0.39	0.49			
	300			350			300			350			300			Not applicable		
	Not applicable			36400	29010	22190	36400	29010	22190	36400	29010	22190	36400	29010	22190			
				32780	26110	20020	31180	26110	20020	32780	26110	20020	31180	26110	20020			
				19.69			13.78			19.69			13.78					
				14.9	18.7	24.6	17.2	20.6	26.7	14.9	18.7	24.6	17.2	20.6	26.7			
				0.20	0.24	0.29	0.29	0.39	1.49	0.20	0.24	0.29	0.29	0.39	0.49			
	350			300			350			300			1.65					
	1.65			1.65			1.65			1.65			1.65					
	0.80			0.80						0.80								
	Open nozzle			Open nozzle						Open nozzle								
	Barrel: 3, nozzle: 2			Barrel: 3, nozzle: 2						Barrel: 3, nozzle: 2								
	7.7			5.5			7.7			5.5			7.7			12.4		
	Double toggle			Double toggle						Double toggle								
	44.1			77.2						110.2								
	18.50			21.65						23.62								
	7.87			9.84						9.84								
	6.693 ~ 10.630			7.874 ~ 11.811						9.843 ~ 13.780								
	14.37×14.37			15.94×15.94						17.91×17.91								
	496×2			661×2						882×2								
	40.63			45.67						51.57								
	1 point			1 point						1 point								
	1.98			2.98						2.98								
	1.575			2.362						2.362								
	3.8			4.4			4.6			5.6			5.8			6.6		
	Not applicable			4.6			5.0			5.8			6.2			Not applicable		
	7.30	4.54	10.18	7.80	4.61	10.04	7.80	4.61	10.89	8.71	5.61	10.58	8.71	5.61	11.42	8.71	5.61	12.42
	Not applicable			7.80	4.61	11.44	7.80	4.61	12.78	8.71	5.61	11.98	8.71	5.61	13.32	Not applicable		
	2.92			3.26						3.53								

Rotary Type Performance Table

Unit	Item	Model	JT150RAD						JT220RAD						
			110V			230V			230V			410V			
		Unit	K	A	B(Optional)	K	A	B(Optional)	K	A	B(Optional)	K	A	B(Optional)	
Injection Unit	Screw barrel type		K	A	B(Optional)	K	A	B(Optional)	K	A	B(Optional)	K	A	B(Optional)	
	Screw diameter	in	1.26	1.38	1.57	1.57	1.77	1.97	1.57	1.77	1.97	1.81	2.09	2.28	
	Screw stroke	in	4.331			5.709			5.709			7.283			
	Theoretical injection capacity	in ³	5.40	6.48	8.38	11.05	14.05	17.40	11.05	14.05	17.40	18.74	24.99	29.74	
	Injection capacity (GP-PS)	oz	3.0	3.6	4.6	6.1	7.7	9.6	6.1	7.7	9.6	10.3	13.7	16.4	
	Standard	Injection pressure (Max.)	psi	31180	26110	20020	33070	26110	21180	33070	26110	21180	34660	26110	21760
		Holding pressure (Max.)	psi	28140	23500	17980	29730	23500	19000	29730	23500	19000	31180	23500	19580
		Injection speed	in/s	6.30			6.30			6.30			6.30		
		Injection rate	in ³ /s	7.9	9.4	12.2	12.2	15.5	19.2	12.2	15.5	19.2	16.2	21.6	25.7
		Plasticizing rate (GP-PS)	oz/s	0.29	0.39	0.49	0.59	0.74	0.86	0.59	0.74	0.86	0.69	0.98	1.2
		Screw speed	rpm	300			250			250			220		
	Low-inertia (HR) Option	Injection pressure (Max.)	psi	34660	29010	22190	Not applicable			Not applicable			Not applicable		
		Holding pressure (Max.)	psi	31180	26110	20020									
		Injection speed	in/s	7.87											
		Injection rate	in ³ /s	9.8	11.8	15.2									
		Plasticizing rate (GP-PS)	oz/s	0.29	0.39	0.49									
		Screw speed	rpm	300											
	High-speed (HS) Option	Injection pressure (Max.)	psi	34660	29010	22190	33070	26110	21180	33070	26110	21180	34660	26110	21760
		Holding pressure (Max.)	psi	31180	26110	20020	29730	23500	19000	29730	23500	19000	31180	23500	19580
		Injection speed	in/s	13.78			12.98			12.99			11.81		
		Injection rate	in ³ /s	17.2	20.6	26.7	25.1	32.0	39.6	25.1	32.0	39.6	30.4	40.5	48.2
		Plasticizing rate (GP-PS)	oz/s	0.29	0.39	0.49	0.59	0.74	0.86	0.59	0.74	0.86	0.69	0.98	1.22
		Screw speed	rpm	300			250			250			220		
	Nozzle touch force	US ton	1.65			1.65			1.65			1.65			
	Nozzle stroke from platen	in	0.80						0.80						
	Type of nozzle		Open nozzle						Open nozzle						
	Barrel temperature control		Barrel: 3, nozzle: 2						Barrel: 3, nozzle: 2						
Heater wattage	kW	7.7			12.4			12.4			13.1				
Clamping Unit	Mechanism		Double toggle						Double toggle						
	Clamping force	US ton	165.3						242.5						
	Daylight opening (Max.)	in	25.59						31.50						
	Opening stroke (Max.)	in	9.84						13.78						
	Mold height	in	11.811 ~ 15.748						13.780 ~ 17.717						
	Mold size (Max.)	in	20.08×20.08						22.05×22.05						
	Lower mold weight (Max.)	lb	1102×2						1521×2						
	Table outside diameter	mm	58.66						64.17						
	Ejector point		1 point						3 points						
	Ejector force	US ton	2.98						4.74						
Ejector stroke	in	2.362						3.937							
Miscellaneous	Machine weight	US ton	7.8			8.4			12.5			13.5			
	Machine weight (HS)	US ton	8.1			8.8			13.0			13.7			
	Machine dimensions (L×W×H)	ft	9.27	6.23	12.05	9.27	6.23	13.05	11.09	6.07	14.93	11.09	6.07	17.63	
	Machine dimensions (HS) (L×W×H)	ft	9.27	6.23	13.94	9.27	6.23	14.98	11.09	6.07	16.56	11.09	6.07	17.78	
	Table height	ft	3.93						4.82						

Remarks:

- Maximum injection pressure and maximum holding pressure may be restricted due to molding condition.
- The theoretical injection capacity is (cross sectional area of barrel) × (stroke of screw).
- The injection capacity is applicable for GP-PS and variable according to the grade of resin, molding conditions and mold.
- The plasticizing rate is applicable for GP-PS.
- PC, HPVC, other engineering plastic, etc., low temperature setting and high speed molding may require a high torque depending on the grade or molding conditions. Please contact us if you plan.

Note:

- Due to continual improvements, specifications are subject to change without notice.
- Actual figures of the specification will vary depending on final machine configuration. Please contact us if you require more specific data.
- Performance specifications are based on theoretical data.
- Low inertia injection specifications and high-speed injection specifications can be handled as option.
- Screw barrel type B is optional.

JT220RAD(Wide) (OP)						
230V			410V			
K	A	B(Optional)	K	A	B(Optional)	
1.57	1.77	1.97	1.81	2.09	2.28	
5.709			7.283			
11.05	14.05	17.40	18.74	24.99	29.74	
6.1	7.7	9.6	10.3	13.7	16.4	
33070	26110	21180	34660	26110	21760	
29730	23500	19000	31180	23500	19580	
6.30			6.30			
12.2	15.5	19.2	16.2	21.6	25.7	
0.59	0.74	0.86	0.69	0.98	1.22	
250			220			
Not applicable			Not applicable			
33070	26110	21180	34660	26110	21760	
29730	23500	19000	31180	23500	19580	
12.99			11.81			
25.1	32.0	39.6	30.4	40.5	48.2	
0.59	0.74	0.86	0.69	0.98	1.22	
250			220			
1.65			2.20			
0.80						
Open nozzle						
Barrel: 3, nozzle: 2						
12.4			13.1			
Double toggle						
242.5						
31.50						
13.78						
13.780 ~ 17.717						
25.98 × 25.98						
1521 × 2						
69.29						
3 points						
4.74						
3.937						
12.9			14.0			
13.5			14.2			
11.08	6.50	14.93	11.08	6.50	17.63	
11.08	6.50	16.56	11.08	6.50	17.78	
4.82						

Single Acting Type Performance Table

Unit	Item	Model	JT40AD									JT70AD			
			20V			55V			110V			55V			
		Unit	K	A	B(Optional)	K	A	B(Optional)	K	A	B(Optional)	K	A	B(Optional)	
Injection Unit	Screw barrel type		K	A	B(Optional)	K	A	B(Optional)	K	A	B(Optional)	K	A	B(Optional)	
	Screw diameter	in	0.71	0.79	0.87	0.98	1.10	1.26	1.26	1.38	1.57	0.98	1.10	1.26	
	Screw stroke	in	2.559			3.543			4.331			3.543			
	Theoretical injection capacity	in ³	1.01	1.25	1.52	2.67	3.37	4.42	5.40	6.48	8.38	2.67	3.37	4.42	
	Injection capacity (GP-PS)	oz	0.6	0.7	0.8	1.5	1.8	2.4	3.0	3.6	4.6	1.5	1.8	2.4	
	Standard	Injection pressure (Max.)	psi	32200	26110	21610	32780	26110	20020	31180	26110	20020	32780	26110	20020
		Holding pressure (Max.)	psi	29010	23500	19440	29440	23500	17980	28140	23500	17980	29440	23500	17980
		Injection speed	in/s	11.81			10.63			6.30			10.63		
		Injection rate	in ³ /s	4.7	5.8	7.0	8.0	10.1	13.3	7.9	9.4	12.2	8.0	10.1	13.3
		Plasticizing rate (GP-PS)	oz/s	0.14	0.18	0.22	0.20	0.24	0.29	0.29	0.39	0.49	0.20	0.24	0.29
		Screw speed	rpm	500			350			300			350		
	Low-inertia (HR) Option	Injection pressure (Max.)	psi	35820	29010	23930	36400	29010	22190	34660	29010	22190	36400	29010	22190
		Holding pressure (Max.)	psi	32200	26110	21610	32780	26110	20020	31180	26110	20020	32780	26110	20020
		Injection speed	in/s	13.78			13.78			7.87			13.78		
		Injection rate	in ³ /s	5.5	6.8	8.2	10.4	13.1	17.2	9.8	11.8	15.2	10.4	13.1	17.2
		Plasticizing rate (GP-PS)	oz/s	0.14	0.18	0.22	0.20	0.24	0.29	0.29	0.39	0.49	0.20	0.24	0.29
		Screw speed	rpm	500			350			300			350		
	High-speed (HS) Option	Injection pressure (Max.)	psi	35820	29010	23930	36400	29010	22190	Not applicable			36400	29010	22190
		Holding pressure (Max.)	psi	32200	26110	21610	32780	26110	20020				32780	26110	20020
		Injection speed	in/s	21.65			19.69						19.69		
		Injection rate	in ³ /s	8.6	10.6	12.9	14.9	18.7	24.6				14.9	18.7	24.6
		Plasticizing rate (GP-PS)	oz/s	0.14	0.18	0.22	0.20	0.24	0.29				0.20	0.24	0.29
		Screw speed	rpm	500			350						350		
	Nozzle touch force	US ton	1.65			1.65			1.65			1.65			
	Nozzle stroke from platen	in	0.80						0.80						
	Type of nozzle		Open nozzle						Open nozzle						
Barrel temperature control		Barrel: 3, nozzle: 2						Barrel: 3, nozzle: 2							
Heater wattage	kW	3.0			5.5			7.7			5.5				
Clamping Unit	Mechanism		Double toggle						Double toggle						
	Clamping force	US ton	44.1						77.2						
	Daylight opening (Max.)	in	21.65						23.62						
	Opening stroke (Max.)	in	9.84						9.84						
	Mold height	in	7.874 ~ 11.811						9.843 ~ 13.780						
	Distance between tie-bars (D×W)	in	14.17×21.06						16.14×21.65						
	Ejector point		5 points						5 points						
	Ejector force	US ton	1.98						2.98						
Ejector stroke	in	1.575						2.362							
Miscellaneous	Machine weight	US ton	3.4			3.5			3.8			4.3			
	Machine weight (HS)	US ton	3.5			3.6			Not applicable			4.4			
	Machine dimensions (L×W×H)	ft	6.01	4.68	9.42	6.01	4.68	9.93	6.01	4.68	10.78	6.29	5.05	10.36	
	Machine dimensions (HS) (L×W×H)	ft	6.01	4.68	10.60	6.01	4.68	11.33	Not applicable			6.29	5.05	11.76	
	Table height	ft	3.22						3.41						

Remarks:

- Maximum injection pressure and maximum holding pressure may be restricted due to molding condition.
- The theoretical injection capacity is (cross sectional area of barrel) × (stroke of screw).
- The injection capacity is applicable for GP-PS and variable according to the grade of resin, molding conditions and mold.
- The plasticizing rate is applicable for GP-PS.
- PC, HPVC, other engineering plastic, etc., low temperature setting and high speed molding may require a high torque depending on the grade or molding conditions. Please contact us if you plan.

Note:

- Due to continual improvements, specifications are subject to change without notice.
- Actual figures of the specification will vary depending on final machine configuration. Please contact us if you require more specific data.
- Performance specifications are based on theoretical data.
- Low inertia injection specifications and high-speed injection specifications can be handled as option.
- Screw barrel type B is optional.

	JT70AD			JT100AD								
	110V			55V			110V			230V		
	K	A	B(Optional)	K	A	B(Optional)	K	A	B(Optional)	K	A	B(Optional)
	1.26	1.38	1.57	0.98	1.10	1.26	1.26	1.38	1.57	1.57	1.77	1.97
	4.331			3.543			4.331			5.709		
	5.40	6.48	8.38	2.67	3.37	4.42	5.40	6.48	8.38	11.05	14.05	17.40
	3.0	3.6	4.6	1.5	1.8	2.4	3.0	3.6	4.6	6.1	7.7	9.6
	31180	26110	20020	32780	26110	20020	31180	26110	20020	33070	26110	21180
	28140	23500	17980	29440	23500	17980	28140	23500	17980	29730	23500	19000
	6.30			10.63			6.30			6.30		
	7.9	9.4	12.2	8.0	10.1	13.3	7.9	9.4	12.2	12.2	15.5	19.2
	0.29	0.39	0.49	0.20	0.24	0.29	0.29	0.39	0.49	0.59	0.74	0.86
	300			350			300			250		
	34660	29010	22190	36400	29010	22190	34660	29010	22190	Not applicable		
	31180	26110	20020	32780	26110	20020	31180	26110	20020			
	7.87			13.78			7.87					
	9.8	11.8	15.2	10.4	13.1	17.2	9.8	11.8	15.2			
	0.29	0.39	0.49	0.20	0.24	0.29	0.29	0.39	0.49			
	300			350			300			Not applicable		
	34660	29010	22190	36400	29010	22190	34660	29010	22190			
	31180	26110	20020	32780	26110	20020	31180	26110	20020			
	13.78			19.69			13.78					
	17.2	20.6	26.7	14.9	18.7	24.6	17.2	20.6	26.7			
	0.29	0.39	0.49	0.20	0.24	0.29	0.29	0.39	0.49			
	300			350			300			1.65		
	1.65			1.65			1.65					
	0.80			0.80			0.80					
	Open nozzle			Open nozzle								
	Barrel: 3, nozzle: 2			Barrel: 3, nozzle: 2								
	7.7			5.5			7.7			12.4		
	Double toggle			Double toggle								
	77.2			110.2								
	23.62			25.59								
	9.84			9.84								
	9.843 ~ 13.780			11.811 ~ 15.748								
	16.14×21.65			18.11×23.43								
	5 points			5 points								
	2.98			2.98								
	2.362			2.362								
	4.5			5.0			5.3			5.8		
	4.7			5.1			5.5			Not applicable		
	6.29	5.05	11.20	6.53	5.31	10.83	6.53	5.31	11.67	6.53	5.31	12.68
	6.29	5.05	13.10	6.53	5.31	12.23	6.53	5.31	13.57	Not applicable		
	3.41			3.62								

List of standard accessories and optional accessories

List of standard accessories

Item		
Injection/plasticizing	KC nozzle (tip type)	
	N2000F barrel (corrosion/abrasion resistance type) <small>Note 1</small>	
	LSP-2 screw (abrasion resistance type) <small>Note 1</small>	
	HT screw head	
	Screw suck-back	
	Screw and barrel attachment/detachment device	
	Screw cold start prevention	
	Molding/Pause temperature select	
	Automatic purging circuit	
	Nozzle touch force remote setting	
	Nozzle retract select	
	Suck-back select	
	Automatic greasing	
	Injection/Metering programmed control	Injection/holding pressure: 1 to 6 steps (variable) Metering/back pressure: 1 to 3 steps (variable)
	Holding pressure transfer by speed detection (IVS control)	
	Barrel temperature remote setting	
	Barrel temperature control (SSR)	
	Soft-pack servo control	
	Hopper flange temperature control	
	IWCS control	
	Reverse seal control	
	Holding pressure control select	
	Synchronous temperature rise control	
Clamping	Grease-free toggle bushing	
	Automatic greasing	
	Mold open/close and ejection programmed control	Mold open/close: 4 steps (fixed) Ejection: 1 to 3 steps (variable)
	Electric-driven mold thickness adjusting device	
	Mold thickness remote setting	
	Auto clamping force setting	
	Toggle type injection compression function	A-mode B-mode Compression: 1 to 6 steps (variable)
	Mold protection function	
	Photoelectric safety device (rotary type only)	
	Table speed remote setting (rotary type only)	
	Clamping safety device (electric/double mechanical type) <small>Note 2</small>	
	Robot mounting holes	

Note 1: One set of K or A size screws is equipped in standard. B size is optional.

Note 2: Photoelectric type is used for operation side of rotary type.

Note 3: The external memory can store up to 1000 mold conditions. Prepare commercial USB data storage media.

Note 4: Printer and printer cable are optional.

Note 5: Thermal sensor and electric wiring are not included.

Note 6: A maximum of 8 items and alarms can be selected out of the following monitor items.

- ① Cycle time ② Injection time ③ Metering time ④ Cushion position ⑤ Holding pressure end position
⑥ Injection pressure ⑦ Holding pressure transfer pressure ⑧ Screw back pressure ⑨ Metering end position
⑩ Injection start position ⑪ Holding pressure transfer position ⑫ Mold open time ⑬ Mold close time
⑭ Metering torque ⑮ Holding pressure transfer speed ⑯ Mold inner pressure <option>

Note 7: Indicates inspection time and items.

List of optional accessories

Item	
Injection	Long nozzle
	Shut-off nozzle (pneumatic type)
	Hi-Melta MII screw <small>Note 1</small>
	Ultra corrosion/abrasion resistance screw barrel <small>Note 2</small>
	B size screw barrel
	Hopper throat abrasion resistance sleeve
	Barrel insulation cover
	Hopper
	Hopper attachment tube
	Ceramic screw head
	PCD screw head
	Module 1 rank down sized barrel
	Residual resin alarm
Clamping	Low inertial injection (HR)
	High-speed/high-response injection (HS)
	Vent-type injection device <small>Note 3</small>
	Daylight extension
	Thermal insulation plate for platens <small>Note 4</small>
	Air jet
	Core pull circuit (pneumatic type, hydraulic type) <small>Note 5</small>
	Unscrewing motor circuit
	Die clamper
	Upper-die ejector (hydraulic type) <small>Note 5</small>
	Ejector 3-point ejection (rotary type only)
	Ejector stroke extension (rotary type only)
	Mold temperature control piping (for high-temperature, rotary type only)
Mold setup device (inside platen, outside platen) <small>Note 6</small>	
Mold one-direction access (270 deg. rotation, rotary type only)	
Mold clamper	
Electric installation/control	Other language select (Hangu/ Spanish) <small>Note 7</small>
	Simple centralized monitoring system LINK10 <small>Note 8</small>
	Centralized management system NET100 <small>Note 9</small>
	Heater disconnection alarm
	Mold temperature display (with mold temperature upper/lower limit alarm)
Others	Mold temperature control device (heater type)
	Printer (with printer cable)
	Robot interface
	Cooling water flow indicator
	Cooling water failure warning
Others	Leveling pads for installation
	Rotary warning light
	Export specifications <small>Note 10</small>
	Designated color <small>Note 11</small>

Note 1: Applied for screw diameters of 35 mm or more.

Note 2: Consult us individually for specifications.

Note 3: Screw diameters of 25 mm or more are compatible.

Note 4: If an insulation board is equipped, note that both the nozzle stroke and the range of mold thickness used will be changed.

Note 5: Pump unit is separately required for the hydraulic type.

Note 6: When inside platen access device is equipped, the ejector stroke extension (option) is required.

Note 7: Consult us separately for languages other than the above. English and Chinese are provided standard.

Note 8: LINK10 has measurement value data collection, molding condition management and remote console functions.

Note 9: The NET100 has quality control and production control functions in addition to the functions of LINK10.

Note 10: For export specifications, separate meetings may be necessary depending on the destination.

Note 11: Designated colors, referring to color samples or Munsell codes.

Utility

■ Total Power Capacity

Rotary type

Model	Injection unit	Total power capacity (kVA)
JT20RAD	20V	18.9
	20V-HR*	18.9
	20V-HS*	20.3
	55V	23.5
	55V-HR	23.5
JT40RAD	20V	19.3
	20V-HR	19.3
	20V-HS	20.6
	55V	23.8
	55V-HR	23.8
	55V-HS	24.8
	110V	26.4
110V-HR	26.4	
JT70RAD	55V	24.8
	55V-HR	24.8
	55V-HS	25.7
	110V	27.4
	110V-HR	27.4
JT100RAD	110V-HS	30.0
	230V	35.0
	55V	24.8
	55V-HR	24.8
	55V-HS	25.7
JT150RAD	110V	28.1
	110V-HR	28.1
	110V-HS	30.7
	230V	35.7
	230V-HS	42.5
JT220RAD (Wide)	230V	37.5
	230V-HS	44.2
	410V	56.9
	410V-HS	60.3

HR* Low-inertia (option)
HS* High-speed (option)

Single acting type

Model	Injection unit	Total power capacity (kVA)
JT40AD	20V	18.8
	20V-HR	18.8
	20V-HS	20.1
	55V	23.3
	55V-HR	23.3
	55V-HS	24.3
	110V	25.9
110V-HR	25.9	
JT70AD	55V	23.9
	55V-HR	23.9
	55V-HS	24.9
	110V	26.5
	110V-HR	26.5
JT100AD	110V-HS	29.2
	55V	23.9
	55V-HR	23.9
	55V-HS	24.9
	110V	26.5
	110V-HR	26.5
	110V-HS	29.2
	230V	34.2

Note1. Total power capacity is values obtained by adding the capacity of molding machine unit to the capacity of mold thermal control/hydraulic unit, which is optional.

Note2. We recommend that the rated interrupting current of the main power supply breaker is more than 25kA at AC400V/460V.

■ Capacity of Cooling Water (outline)/ Capacity of Air

Rotary type

Model	Colling water capacity for barrel temperature control (ft ³ /h)	Compressed air pressure (psi)	Compressed air necessity volume (NL/min)
JT20RAD	10.59	72.5	2
JT40RAD	10.59	72.5	2
JT70RAD	10.59	72.5	2
JT100RAD	10.59	72.5	2
JT150RAD	10.59	72.5	2
JT220RAD (Wide)	10.59	72.5	2

Single acting type

Model	Colling water capacity for barrel temperature control (ft ³ /h)	Compressed air pressure (psi)	Compressed air necessity volume (NL/min)
JT40AD	10.59	72.5	2
JT70AD	10.59	72.5	2
JT100AD	10.59	72.5	2

Note: The above figures do not include the required quantity of water for the temperature controller.

JSW THE JAPAN STEEL WORKS, LTD.

URL <http://www.jsw.co.jp/>

Division Gate City Ohsaki-West Tower, 11-1, Osaki 1-chome, Shinagawa-ku,
Head Quarter: Tokyo 141-0032, Japan
Phone: +81-3-5745-2081 Fax: +81-3-5745-2083~84
URL http://www.jsw.co.jp/inj_f/inj_index.htm

JSW Plastics Machinery Inc.

Head Office: 555 South Promenade Ave., Unit 104, Corona, California 92879, U.S.A.
Phone: +1-951-898-0934 Fax: +1-951-898-0944
Chicago Office: 540 Capital Drive, Suite 130, Lake Zurich, Illinois 60047, U.S.A.
Phone: +1-847-550-0704 Fax: +1-847-550-0725
Detroit Office: 24301 Catherine Industrial Drive, Unit 118, Novi, Michigan 48375, U.S.A.
Phone: +1-248-449-5422 Fax: +1-248-449-6018

JSW Plastics Machinery (S) Pte Ltd

Head Office: 17, Gul Lane, Jurong Town, Singapore 629413, Republic of Singapore
Phone: +65-68614511 Fax: +65-68623166
Philippine Office: Chemdis Bldg., Don Jesus Blvd., Alabang Hills Village, Muntinlupa City,
Philippines
Phone: +63-2-809-8982 Fax: +63-2-809-6221
Indonesia Office: Graha Cevril, Jl. Senopati Raya No.6A, Jakarta 12110, Indonesia
Phone: +62-21-725-7486 Fax: +62-21-725-7865

JSW Plastics Machinery (M) SDN. BHD.

D6-5-G, (Ground Floor), Block D6, Pusat Perdagangan Dana 1,
Jalan Pju 1A/46, 47301, Petaling Jaya, Selangor Darul Ehsan, Malaysia
Phone: +60-3-78426076 Fax: +60-3-78426078

JSW Plastics Machinery (T) Co., Ltd.

78/6 JST Building 4th Fl., Moo 7 King Kaew Road, Rachatewa,
Bangplee, Samutprakarn 10540 Thailand
Phone: +66-2-738-5272 Fax: +66-2-738-5277

JSW Plastics Machinery Vietnam Ltd.

Room103, Techno-Center Thang Long Industrial Park Dong Anh District,
Hanoi, Viet Nam
Phone: +84-4-3951-6383 Fax: +84-4-3951-6384

JSW Plastics Machinery (H.K.) Co., Ltd.

Room 907, Corporation Park, 11 On Lai Street, Shatin N.T., Hong Kong
Phone: +852-2648-0720 Fax: +852-2686-8204

JSW Injection Machine Maintenance (Shenzhen) Co., Ltd.

1/F, Block A, Sanhe Industrial Park, Yongxin Street, Yingrenshi Village,
Shiyan Town, Baoan District, Shenzhen, 518108, People's Republic of China
Phone: +86-755-8602-0930 Fax: +86-755-8602-0934

JSW Plastics Machinery (Shanghai) Corp.

28A, Strength Plaza, No.600-4, Tianshan Road, Shanghai, 200051,
People's Republic of China
Phone: +86-21-5206-7031 Fax: +86-21-5206-7033

JSW Plastics Machinery (TAIWAN) Corp.

Head Office: 1F, No.23, Da Hu 1st Rd., Guishan Shiang Taoyuan, Taiwan, R.O.C.
Phone: +886-3-396-2102 Fax: +886-3-396-2104
Tainan Office: 15 F-7, No.689-78, Shiau E. Rd., Yung Kang City, Tainan, Taiwan, R.O.C.
Phone: +886-6-311-4192 Fax: +886-6-311-4193

