

Performance Table

Unit	Item	Model	J140AD									
			60H			110H			180H			
Injection Unit	Screw cylinder type		K	A	B	K	A	B	K	A	B	
	Screw diameter	in	0.98	1.10	1.26	1.26	1.38	1.57	1.38	1.57	1.77	
	Screw stroke	in	3.937			4.724			5.512			
	Theoretical injection capacity	in ³	2.99	3.78	4.88	5.92	7.02	9.22	8.24	10.74	13.61	
	Standard	Injection capacity (GP-PS)	oz	1.6	2.0	2.6	3.1	3.7	4.8	4.3	5.6	7.2
		Injection pressure (Max.)	psi	39160	31180	23930	39160	32630	24950	37710	28860	22770
		Holding pressure (Max.)	psi	35530	28280	21760	35530	29730	22770	34230	26250	20740
		Injection speed	in/s	13.78			13.78			13.78		
		Injection rate	in ³ /s	10.4	13.1	17.2	17.2	20.6	26.7	20.6	26.7	33.9
		Plasticizing rate (GP-PS)	oz/s	0.33	0.45	0.73	0.73	0.90	1.21	0.90	1.24	1.63
		Screw speed	rpm	400			400			400		
	High speed (HS)	Injection pressure (Max.)	psi	39160	31180	23930	—	—	—	—	—	—
		Holding pressure (Max.)	psi	35530	28280	21760	—	—	—	—	—	—
		Injection speed	in/s	19.69			—			—		
		Injection rate	in ³ /s	14.8	18.7	24.5	—	—	—	—	—	—
		Plasticizing rate (GP-PS)	oz/s	0.33	0.45	0.73	—	—	—	—	—	—
	Ultra speed (US)	Screw speed	rpm	400			—			—		
		Injection pressure (Max.)	psi	39160	31180	23930	—	—	—	—	—	—
		Holding pressure (Max.)	psi	35530	28280	21760	—	—	—	—	—	—
		Injection speed	in/s	31.50			—			—		
		Injection rate	in ³ /s	23.9	30.2	39.0	—	—	—	—	—	—
	Clamping Unit	Plasticizing rate (GP-PS)	oz/s	0.33	0.45	0.73	—	—	—	—	—	—
		Screw speed	rpm	400			—			—		
		Nozzle touch force	U.S. ton	1.66			2.21			2.21		
		Nozzle stroke from platen	in	2.0								
		Type of nozzle		Open nozzle (Tip type)								
		Cylinder temperature control		Cylinder 4 / Nozzle 2								
Heater wattage		kW	5.5			9.2			10.2			
Mechanism			Double toggle									
Clamping force		U.S. ton	154.0									
Daylight opening (Max.)		in	33.46									
Opening stroke (Max.)	in	15.75										
Mold height	in	7.874~17.717										
Distance between tie-bars (H×V)	in	20.87×18.11										
Platen size (H×V)	in	30.71×25.98										
Ejector point		5 points										
Ejector force	U.S. ton	3.64										
Ejector stroke	in	3.937										
General	Machine weight	U.S. ton	6.9			7.1			7.2			
	Machine dimensions (L×W×H)	ft	15.65×4.13×5.87			16.11×4.13×5.87			16.34×4.13×5.87			

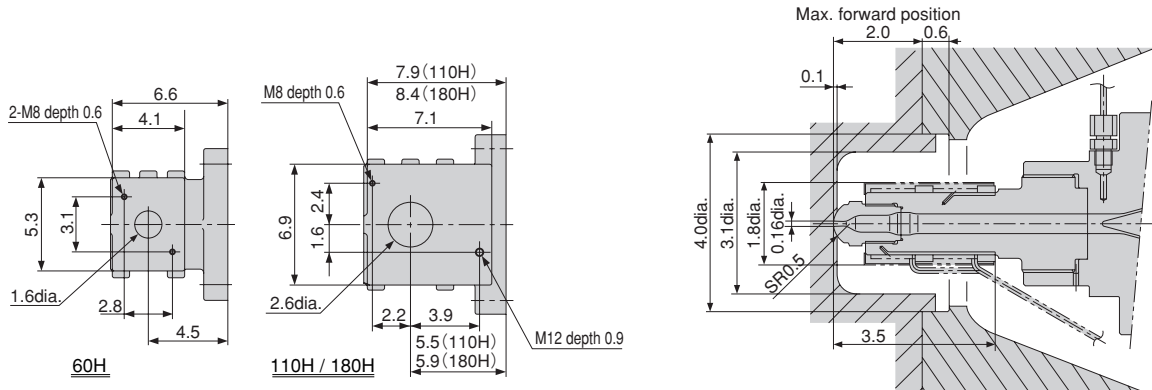
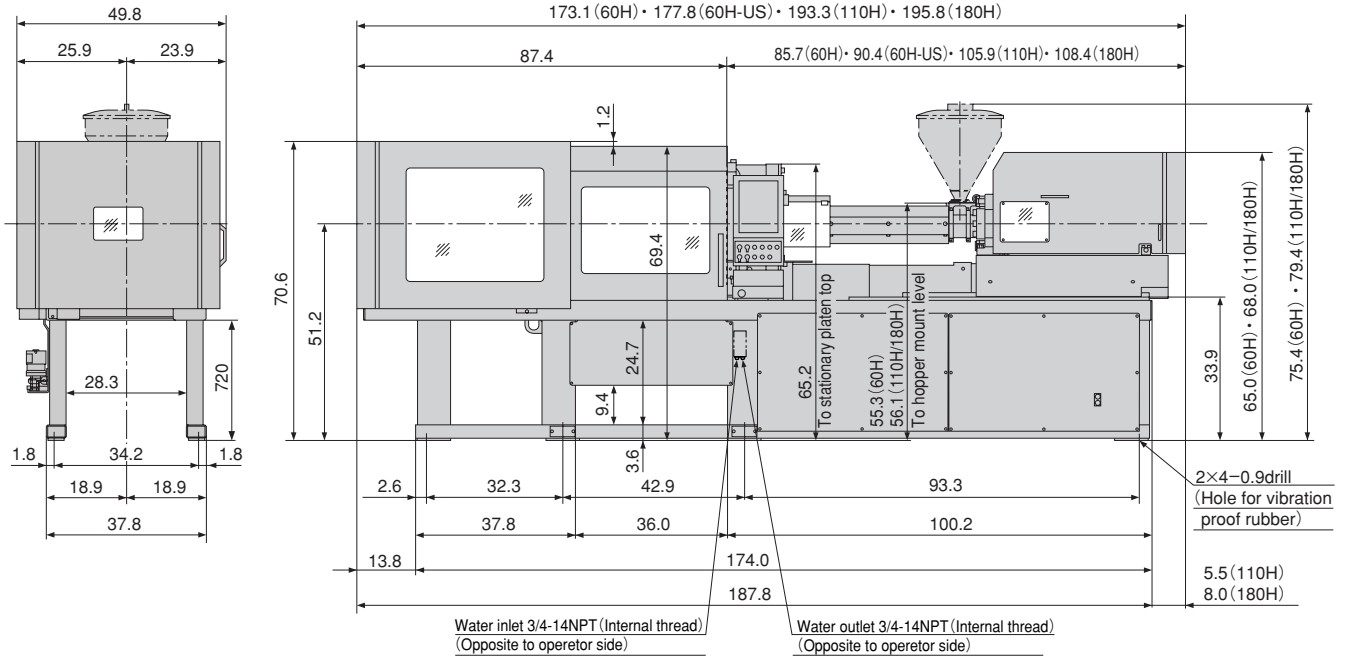
Remarks:

1. Maximum injection pressure and maximum holding pressure may be restricted due to molding condition.
2. The theoretical injection capacity is (cross sectional area of cylinder) × (stroke of screw).
3. The injection capacity is applicable for GP-PS and variable according to the grade of resin, molding conditions and mold.
4. The plasticizing rate is applicable for GP-PS.
5. PC, HPVC, other engineering plastic, etc., low temperature setting and high speed molding may require a high torque depending on the grade or molding conditions. Please contact us if you plan.

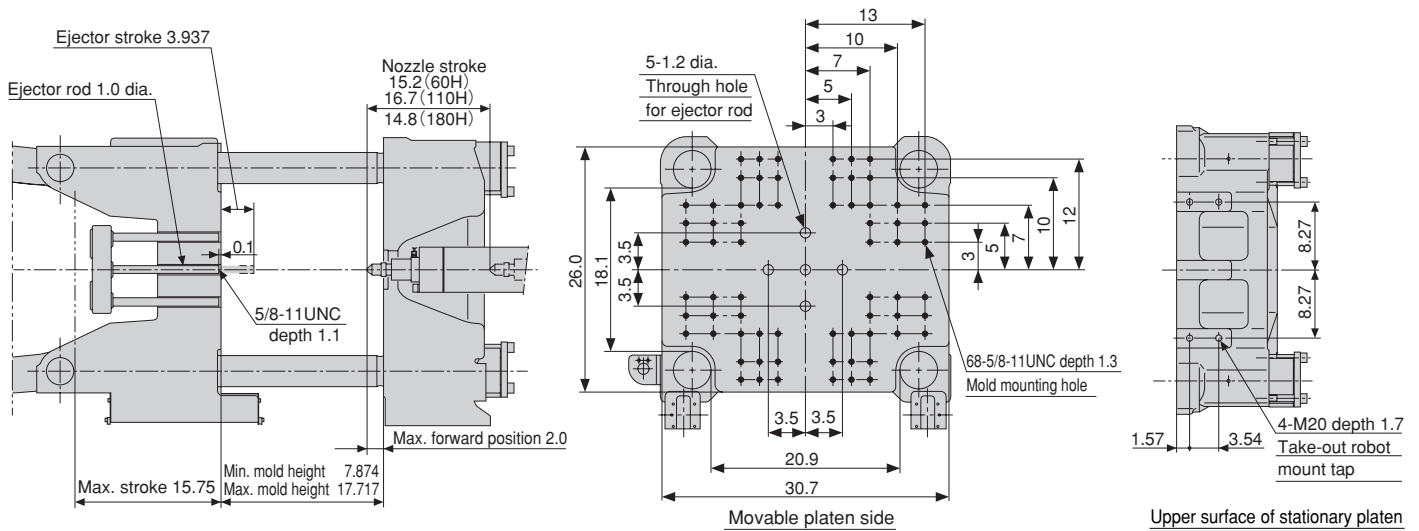
Note:

1. Due to continual improvements, specifications are subject to change without notice.
2. Actual figures of the specification will vary depending on final machine configuration. Please contact us if you require more specific data.
3. Performance specifications are based on theoretical data.
4. High speed injection and Ultra speed injection are optional.

Equipment Dimensions and Mold Related Dimensions



Hopper mount



Upper surface of stationary platen